

BREMERTON MARINA PARKING DURING CONSTRUCTION: FALL UPDATE 2020

Thank you for considering this email and we at the Port of Bremerton hope you had a wonderful 2020 boating season. This update indicates the parking changes reflected for the Port of Bremerton during this temporary Marina Square Construction period.

Marina Square Project update: You may be aware that the Marina Square project, a new mixed use residential and commercial building under construction at 280 Washington Avenue. The Marina Square development plans include 3-levels of subterranean parking with 75 spaces within the new waterfront garage dedicated to the Port of Bremerton marina tenants. Construction is anticipated to be ongoing.



ONGOING PARKING OPTIONS DURING CONSTRUCTION:

WASHINGTON AVENUE GARAGE – 2ND FLOOR

During construction of the Marina Square project, free marina tenant parking has been relocated to the 2nd floor only of the Washington Street Parking Garage located at 405 Washington Avenue.

- The Washington Street City garage 2nd floor has been clearly marked “Reserved” for Port of Bremerton Marina Parking only. Upper floors are available for free parking for any citizen from 5 PM to 5 AM but may be ticketed or towed at any other time.
- The City of Bremerton has responded to requests and have replaced or improved overhead lighting within the second-floor parking garage.
- Parking in the Washington Street City garage has been monitored by Impark (parking enforcement) and unauthorized vehicles have been ticketed.
- The City of Bremerton has indicated that security patrols occur with the Bremerton Police Department and SAFE Security conducts regular night patrols.
- The City of Bremerton has prepared specific motorcycle parking and have marked these interstitial spaces to accommodate marina tenant motorcycle parking.

OVERSIZE VEHICLE PARKING: The Port of Bremerton has also negotiated two (2) open parking spaces located off 5th Street. The spaces are 9 feet wide by 18 feet long and have no height limit. Parking Space #23, and Space #24 are available for marina tenant over height vehicle parking. These spaces are limited to a maximum of 72 hours per vehicle and will be patrolled. If any vehicle requires more than 72 hours, then the Port of Bremerton Valet service with secure airport parking should be utilized for that vehicle. Additional signage for these new stalls will be installed in late September.

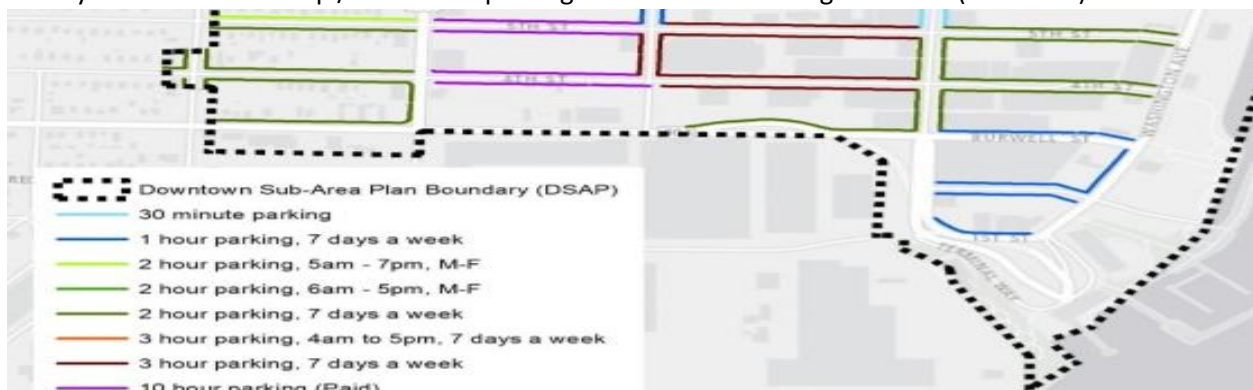


BREMERTON ON-STREET PARKING GUIDE

During busy times free on-street parking may be a viable alternative. Having the available free on-street parking regulations from the City may assist in those times when a free garage parking may not be immediately available.

Information related to Bremerton City On-Street Free Parking.

- The closest on-street free parking to the marina is all 1 hour. (Blue)
- The closest on-street three-hour free parking is on Second and Third streets (Maroon)
- Any on -street Handicap / Accessible parking is 4 hours free during the week (All Colors)



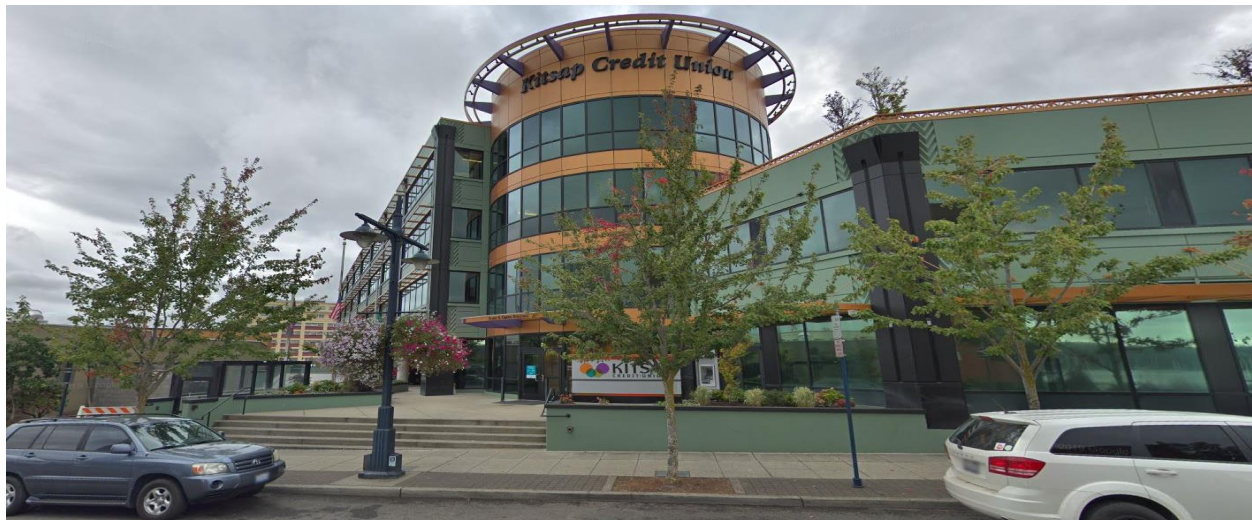
HARBORSIDE GARAGE – HANDICAP SPACES FOR FREE FOR 12 HOURS ONLY ON WEEKENDS:

- Port tenants with HANDICAP plaques and Port parking passes may utilize any of the Harborside Parking Garage spaces on the weekend for periods of 12 hours for free. Please use the special **Port Handicap Parking code 1035** in the payment kiosks when parking in these spaces on the weekends.



KITSAP CREDIT UNION SURFACE PARKING

The Port of Bremerton has negotiated with the Kitsap Credit Union for the use of a limited number of underground parking spaces in their secure underground parking garage, all of those spaces have been reserved for Bremerton marina live aboard tenants.



Public Parking has occurred within the KCU Surface Parking lot. Kitsap Credit Union has not leased any parking spaces directly to the Port of Bremerton for their surface parking lot on Washington and 2nd Avenue. Please note: Port of Bremerton marina tenants have no unique rights to park within that surface parking lot. Any public parking that may have occurred in that lot was solely at the courtesy of Kitsap Credit Union and the Kitsap Credit Union may enforce the citation or towing of any vehicles that may have violated any signage that was posted on site.

Please be aware: Kitsap Credit Union will be strongly enforcing their signage regarding public parking on their surface parking lot over the Fall and into the holidays. Please read and obey all signage.

PRIVATE PAY PARKING

Other **pay parking** options may be available. If any marina tenant wants to research other parking options, we have provided the following sites to assist you with your search:

- City of Bremerton: website: <http://www.ci.bremerton.wa.us/698/Parking-Rates>
- Other Bremerton Parking: <https://lots.impark.com/imp/en?latlng=47.565007,-122.626977&q=Bremerton%20WA%20United%20States>

ADDITIONAL PARKING SERVICES OFFERED BY PORT OF BREMERTON DURING COVID:

To offset the impacts of the parking challenges during the Marina Square Construction, the Port of Bremerton has included the following parking options.

- Free Long-term off-site Parking is available for all Bremerton Marina customers who are out cruising for extended periods of time (4 days or longer). This is located at the Bremerton National Airport and must be coordinated with marina office staff in advance.
- Note: no shuttles or valet service is available until COVID Phase IV for Kitsap County)
- Loading/Unloading parking spaces will be available for Bremerton Marina customers in the Harborside Garage, lower Red Level, located underneath the Hampton Inn.
 - These Loading/Unloading spaces are marked Reserved for Port of Bremerton
 - Loading/Unloading spaces will be monitored by Impark (parking enforcement).
 - Unauthorized vehicles may be ticketed.
 - Vehicles who park longer than the 30-minute max may be ticketed.
- Loaner passes will not be available during the construction period.
- Guest passes will not be available during the construction period.
- Expect all Port of Bremerton Marina Rules and Regulations regarding parking to be enforced.
- Commercial Vendors may be required to utilize City of Bremerton street parking.
- After construction is complete, new marina parking is anticipated to be available in the new parking garage.



BREMERTON BOARDWALK

Please know that the City of Bremerton owns and regulates the Bremerton Boardwalk, adjacent to the marina. Presently, the City is enforcing No Parking on the boardwalk and Impark will be the enforcement contractor for those areas. For any concerns regarding City of Bremerton parking, specifically with the 4th Avenue garage or on the Boardwalk, please contact Melinda Monroe, City of Bremerton, Phone (360) 473-5306, or Melinda.monroe@ci.bremerton.wa.us.

PORT OF BREMERTON CONTACTS

The Port of Bremerton values all our Marina customers and understand that there will be challenges during this period of construction. We thank you in advance for your patience and promise to work with you to resolve issues as they come up. The Marina invites your comments, critiques, ideas, and possible solutions to any of our staff, as we work to resolve these issues together. Thank you again for your patience.

- James Weaver, Director of Marine Facilities – 360/813-0829 or jamesw@portofbremerton.org
- Kathy Garcia, Marina Operations Manager – 360/813-0825 or kathyg@portofbremerton.org